

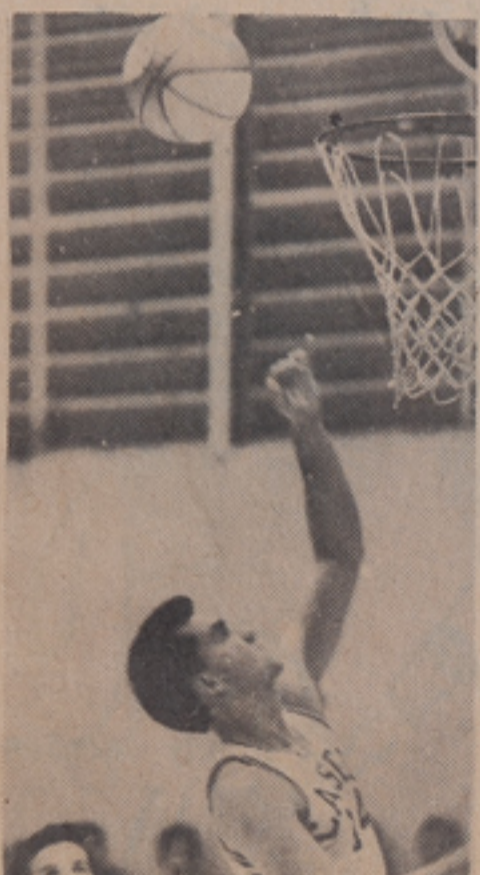
*Castle, Shirley  
March 29*



# NA PALI O KOOLAU

Vol. 1 Castle High School, Kaneohe, Oahu, March 15, 1965 No. 3

## Tommie Blackwell



Thomas Blackwell, co-captain of C.H.S. Basketball team was the winner of the Pre-season Interscholastic Basketball Throw. He got nine shots out of 15. He has played on Castle's team since the ninth grade, starting with the junior varsities. During an interview Tommy said: "We have more team work than previous years. Everyone on the team is friendly among themselves."

His favorite sport is basketball and during his leisure time he practices basketball. His ambition is to be a missile engineer and plans to attend college after graduation. His hobby is fixing cars.

He said: "I am very proud to represent C. H.S. team. I like this school very much. I'll miss not only basketball when I leave but the school itself. I admired the Celtics basketball player, Bob Cousy and planned to be like him. Our coach is doing a terrific job in coaching our team, the Big Knights."

## Junior Varsity

- CASTLE 27 -WAINAE 33
- CASTLE 22 -WAIPAHU 27
- CASTLE 25 -RADFORD 28
- CASTLE 24 -KAILUA 21
- CASTLE 24 -LEILEHUA 49
- CASTLE 19 -AIEA 30
- CASTLE 34 -WAIALUA 31
- CASTLE 27 -CAMPBELL 19
- CASTLE 21 -KAHUKU 20



## Recap of Knight's Basketball Season

### SEA RIDERS

Wainae proved to be too tough for Castle in the first opening seasonal game. Wainae played a close game with Castle until half time. After half time, however, Wainae rode away from Castle. Castle tried real hard to catch up with Wainae. Before they could the game was over. The Sea Riders rode back to Wainae victorious. They defeated Castle with a score of 59 to 51.

Louie Tilton proved to be Castle's high point man of the night.



### RIDE PASS CASTLE

### CASTLE WIPES OUT KAHUKU

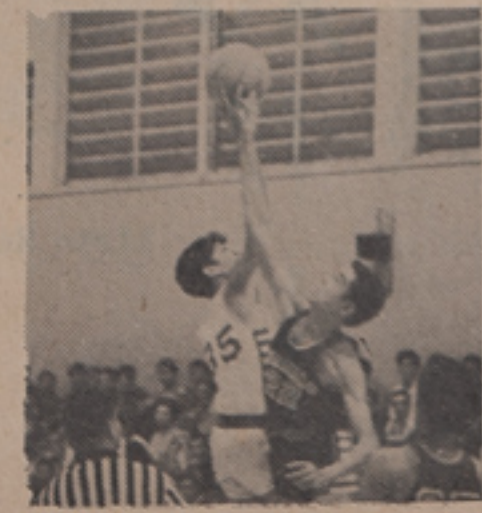
Castle who led the Kahuku game right from the start won with a victorious score of 74 to Kahuku's 43.

Castle's last game was with the Kahuku Red Raiders and they were proud to WIPE THEM OUT. Louie, who was high point man of the night, scored 24 points.

### CASTLE

#### SWEEPS CAMPBELL

Run away, Run away That's just what the Knights did to Campbell... they ran away with the score. Our Knights played real hard during the last games of the season. We beat Campbell by 18 points. The score at the end of the game was 47 - 65.



### CASTLE SNEAKS PASS WAIPAHU

Victory! Victory!

Castle won its first game against Waipahu's Marauders. The game however was a neck to neck game all the way.

The score with one minute left in the fourth quarter was 26 to 27 in favor of the Marauders. Louie Tilton however brightened Castle's outlook that night with a basket and another 2 points added to Castle's score. The buzzer sounded and the game ended but not for Tilton. A technical foul was called on Waipahu and Tilton got a free shot. Basket! And the score went up another notch.

The final scoring for the game was Castle over Waipahu 29 to 27. (cont'd on pg. 4)

## Annie Get Your Gun

"Annie Get Your Gun" will be presented on Mar. 25, 26 & 27 at 8 pm in the C.H.S. Gym.

The production is being directed by Mr. Ronald Bright. Annie will be played by Melanie Chandler and Frank by Robert Luerson.. Other cast members are:

- Francis Palacat, Edwin Gatlin, Wayne Kleckner, Judi Baker, Anna Marie Clark, David Harrington, Gary Moe, Ahol Mench, Brent Hisao, Paul Luerson, Eileen Teves, Martha Whitfield, Rjoya Pokipala, Judy Capellas, Susan Scott, Helene Kellet, Judi Coyaso, Z1 Wright, Valerie Meyers, Larry Cloutier, Gil Meferios, Dennis Akui, Manuel Tavares, Peter Miao, Harry Huihui, Mimi

SEE PAGE 4

ROIA RESULTS	
1.	Radford
2.	Kailua
3.	Wainae
4.	Aiea
5.	Leilehua
6.	CASTLE
7.	Kahuku
8.	Cambell
9.	Waialua

March 15, 1965

## THE QUESTION BOX:

### Are the C.P.O.'s Doing Their Job?



Karen Brown-(senior)  
"They're not doing a satisfactory job, then again, maybe the reason for it is because there is not enough students backing... Maybe the answer to the problem would be solved if they went under the control of the Student Government."



Stephen Kong\*(senior)  
"Yes. They are good, terrific. They stop everybody from smoking.....everybody they.. ..well see. They stop fights...they're what you might call friendly."



Ellen Kaguni-(junior)  
"No they're not. A student court should go into effect to handle the offenders. Too many people get by.....people walking in the corridors...smoking in the bathrooms.....I hope something is done."

Lawrence Kaubiko-(junior)  
"The C.P.O.'s should be made up of people who wouldn't let their friends get by. Some do their jobs..... some are scared."

Billy Williams-(sophomore)  
"They are?..... I don't think so..... not in the bathrooms, people can smoke and, cut in line."

Paul Tam-(ninth grade)  
"Some get wise... they get scared when somebody threatens them."



AND PATRICIA KOKI

BY IRMALEE BASSETT

## Basketball

SUFF'S TOO

BIG FOR CASTLE

Kailua was said to be Castles game of the week and it sure was. The Surfers proved to be a rough tough team. The Knights also proved to be tough and they tried very hard to conquer the Surfers. The Surfers in turn seemed to have luck on their side as they pulled to a smashing triumph at the end of the game.

We must give credit where credit is earned and our boys sure earned that credit. They played a fine game with a terrific coach pushing them till the end. Even when the odds were against Castle, not once did our boys give up. Although Kailua beat us with a 54 to 37 score in favor of the Surfers our boys didn't let that stop them from winning more games.

## Strike up the Band!

The 13th Annual Spring Concert will be held on Saturday April 3rd at 7:30p.m. in the Castle Gym. The tickets will cost \$1.00 for adults and \$50 for students. Tickets for this concert may be bought from any of the band members.

There will be a variety of music both light and classical. This will be the bands last concert this year for the school.

Our band has recently come back from a trip to Hilo. The band left at 5p.m. Friday February 19th and stayed there for three days. During their stay they played at St. Joseph's, 2 concerts at the bandstand, and at a shopping center.

Before the trip the band played a concert for the student body on February 12th. The program consisted of jazz, classical, negro spirituals and show tunes. It had something for everyone.



### Nat'l Honor Society

Nine new members were welcomed into the National Honor Society on Thursday, February 25, during high school study hall assembly.

The members are:  
Seniors: Sheila Kato, Robert Luersen, William Young.  
Junior: Pauline Tsuyama.  
Sophomores: Laura Ajifu, Charlene Demello, Nolan Higa, Aileen Maeda, Kathleen Miyasaki.  
The guest speaker was

Kristine Kobashigawa, N.H.S. award winner last year who is now attending the University of Hawaii.

Induction ceremonies will take place on March 16 at 7 p.m. in the Castle Cafeteria.

### Annie . . . . .

Garriga, Vickie Lee Awai, Deanna Ambo, Gayle Thompson, Valerie Neves, Rose Kalahiki, Daryl Cunningham, Mahalani Thomas, Ross Hart, Jerry Sotelo, Phil Kopa.

### RAMS TRAMPLE KNIGHTS

The Castle Knights met the Radford Rams Saturday January 15 in a head on collision in the Kalakaua Gym. The game was a tough game because the Radford Rams weren't bait for the Knights. The Rams proved to be too tough for Castle after the second half started Radford ran away from Castle during the fourth quarter and ended the game with a victorious score of 44 to 30 in favor of the Ram Baits.

### Castle's Challengers

Three Seniors from Castle are scheduled to appear on "The Challengers" TV show on April 4.

The team consisting of Robert Consoli, Glenn Sansda, Bill Young and alternate Shiela Kato will represent Castle on the Sunday afternoon program at 5:30 on KTRG-TV Channel 13.

### CASTLE MOPS WAIALUA

Castle who led the game all the way was proud to win over Waialua with a score of 58 to Waialua's 52. The team was so excited that they sang all the way home.

### AIEA HOPS OVER CASTLE

Aiea's Allis were rated as one of the top teams of the season. The Knights however made them look not

as tough as they were said to be. The Knights kept the game at a tight score during the third and fourth quarters. The Allis however ended the game with a 58 to 52 score leading with just a 6 point lead.

### MULES WHIP CASTLE

Leilehua whipped Castle with a score of 49 to 37. The game was played at Leilehua's gym. However our boys did play a good game against the Mules.